

LILYDALE ATHENAEUM THEATRE COMPANY

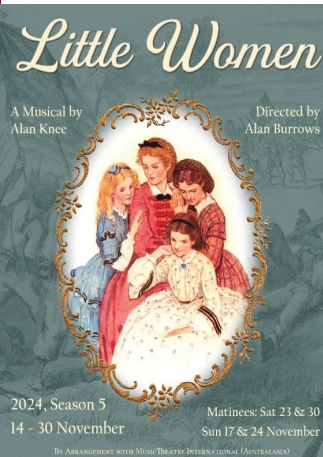


BACKSTAGE

Newsletter

NOVEMBER 2024

SEASON 5 2024 14–30 NOVEMBER



LITTLE WOMEN, the Broadway Musical by **Alan Knee**, directed by **Alan Burrows**, is coming this November.

Louisa May Alcott's beloved story of the March sisters is brought to vivid musical life on stage. This musical was first on Broadway in 2005 and has been playing worldwide con-

stantly ever since.

The American civil war is in full swing and the four March sisters, Meg, Jo, Beth and Amy, live in Concord, Massachusetts with their Marmee while their father is on the battlefield. This musical is filled with adventure, heartbreak and a deep sense of hope, the sisters' struggle to find their own voices, mirrors the growing pains of a young America.

A timeless tale packed with high energy and charm, this show is filled with gentle simplicity, magnificent costumes and singing that is a delight to the ear. This enchanting production captures the heart and soul of the March family and the novel.

Is your **work Christmas party** a bit predictable? Be inspired this year and book your team for meal at a local restaurant and **then come see our show**— **November** - Tickets for Groups of 10+ are **only \$23 each**.

What a way to celebrate the end of the year.

Thursday 14 November to Saturday 30 November 2024

SUBSCRIPTION TICKETS

2025

OPEN FOR SALE

How much do you enjoy coming to the theatre?

A regular theatre goer?

Maybe it's time to buy a Subscription Package to see all five shows for \$110—that's \$22 per show!

Subscription Tickets are now on sale at the Box Office, online or over the phone.

Make sure you don't miss any show during the year by purchasing a Subscription!

**LILYDALE ATHENAEUM THEATRE...
LIVE THEATRE AT YOUR DOORSTEP**

SEASON 2025

We are proud to announce the five shows for the 2025 season:

- * **Moon Over Buffalo (comedy)**
- * **Haunted (Comedy)**
- * **The Diary of Anne Frank (A Drama)**
- * **The Importance of Being Earnest (A trivial comedy for serious people)**
- * **Sister Amnesia's Country Western Nonsense Jamboree (Musical Comedy)**

Another year crammed full of entertainment here at the Lilydale Athenaeum Theatre!

2024- SEASON 4

CLUE On Stage by Jonathan Lynn, Directed by Katie-Jane Amey

WHAT A FANTASTIC SEASON FOR CLUE On Stage—SOLD OUT!

SOLD OUT for almost ALL the performances, our audience just loved CLUE. Here are a few reviews from our audience members with their experience at the theatre:

REVIEWS FROM OUR AUDIENCE:

There is nothing I love more than a cast that is full of Chemistry & Dynamic. Fabulous show and a fantastic performance from all involved. Such an immersive experience that left me on the edge of my seat. The cast and Director should be overwhelmingly proud of themselves. The performances here never fail to amaze me. Special mention to Ian Frost's incredible monologue! – *Kara*

Clue was hysterical! The staging was particularly good and the vaudevillian villains were great! – *Wayne*

Fabulous! What a fun show to see, Wished the show went longer! It was hilarious – *Christine*

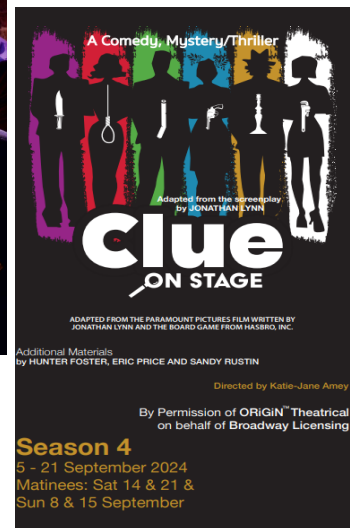
What a great show! Never seen it before - *Keria*

My daughter and I went to see this last night. It was hilarious and by far one of the most enjoyable and well-acted shows we have seen. We go to a lot of amateur and it was the best show by far. Kudos to the lead actor – he was amazing! Thank you for a great show- *Virginia*

A wonderful entertaining afternoon. I loved the enthusiasm of the performers and the beautiful theatre. My first visit but definitely not my last. Thank you so much – *Samantha*

Brilliant!! Didn't stop laughing!! Full of admiration for the actors. All good - *Hilary*

Wow! My first ever show and boy it was brilliant! Smart, witty and incredibly entertaining! - *Scott*



UNDER 30s SUPER DISCOUNT PRICES

Is there someone in your life who loves theatre and is under 30? This year we introduced **Under 30's special ticket prices** on the last Wednesday's performance of every show. At **\$22** how can you go wrong!

Tell them about the offer **LITTLE WOMEN** (Wed 27 November) \$22!

THE WINNER OF THE BOTTLE OF ROB DOLAN SPARKLING WINE FOR WRITING A 'REVIEW' OF 'CLUE On Stage' IS.....

SAMANTHA.... congratulations!!



Be like Samantha and write a review when you next attend one of our shows ... you'll be in with a chance to win a bottle of sparkling wine from Rob Dolan Wines!

Samantha collecting her prize from Lucy at the Box Office

THEATRE GROUP TOURS

During the month of September a number of tours came through our theatre.

The first group to attend a tour was the CALADENIA CENTRE, Mooroolbark. A small group of ten attended and thoroughly enjoyed the history of the building and theatre, followed by a tour of the dressing/green rooms, props store and costume department.



FRONT OF HOUSE MANAGER ROLE

Most of you, our patrons, will immediately recognise the friendly, familiar face of our most valued Front of House Manager, **Lesley Bailey**. After **28 years** of volunteering in FOH, **17** of those years as Manager, Lesley has decided it is time to retire from managing FOH. However, it's not the last we will see of her, you will continue to see Lesley's cheerful face as she continues to help during shows.

That leaves **very large shoes to fill** at our theatre!

We are looking for a **dedicated, reliable and enthusiastic** person to run our FOH. You will be the warm, welcoming face that greets our patrons when they arrive.

Lesley and the theatre staff will fully support you until you feel comfortable in the role.

The position involves checking the stock of beverages & biscuits and arranging a roster of friendly and reliable volunteers. It is a rewarding and fun job ... otherwise Lesley wouldn't have stayed in the role for 17 years!

Contact the Office 9735 1777 for more information.

GO ON, GIVE IT A TRY

Q & A WITH CAST OF CLUE On Stage

The MYSTERY MAVEN BOOK CLUB attended a performance of CLUE On Stage in September, followed by an informal Question & Answer session with the Director, Katie-Jane Amey and the entire cast on stage.

Questions were thrown at the cast, laughter was heard in the auditorium, the director ably answered. A great way to cap off the evening for the MYSTER MAVEN BOOK CLUB.



FIRE EMERGENCY EXERCISE – CFA LILYDALE JOINTLY WITH L.A.T.C ON MONDAY 23 SEPTEMBER

On Monday 23 September the Lilydale Athenaeum Theatre, jointly with the CFA Lilydale, held a fire emergency exercise.

The exercise, organised by First Lieutenant Ron Haines and our own Theatre Manager Fiona Carter, recreated an evening at the theatre.

An audience of 50 were present, enjoying a glass of sherry on arrival. The Front of House staff seated the audience and then the actors began performing CLUE.

During the performance a simulated fire occurred off stage, sirens rang out, the fire curtain was deployed and loud hailer emergency instructions were relayed to the audience.

Our capable Fire Warden, Lesley Bailey, called the fire brigade and then instructed staff and audience on where to exit.

The fire crew set forth into the theatre with breathing apparatus, fire hoses and thermal imaging cameras to locate missing audience members who were stuck in the toilets when the lights went out and also injured and ill patrons (all acting, of course).

After 45 minutes, the emergency was over and the audience returned to the theatre for a debrief by Captain Warren Davis who oversaw the operation.

A valuable exercise both for the volunteer fire fighters as well as our own staff, to better understand what a real life evacuation scenario would be like.

Thank you Ron, Warren and CFA Lilydale.

OPEN DAY SATURDAY

16 NOVEMBER

The theatre will be open on Saturday 16 November from 10am–4pm for an **Open Day** where you will get the opportunity to dress up in costumes, tour the theatre, be in a draw for two tickets to MOON OVER BUFFALO and have a behind the scenes peek.

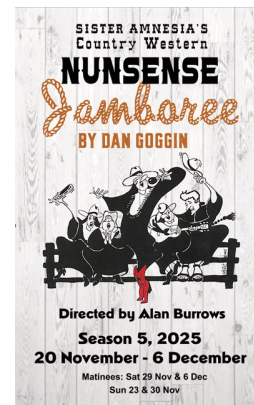
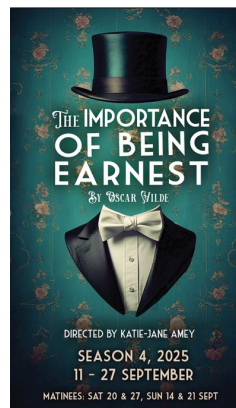
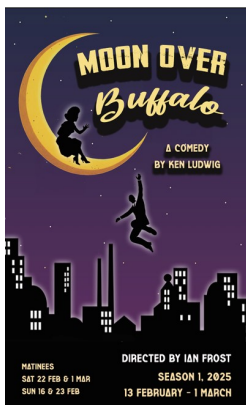
COME JOIN US ON SATURDAY 16 NOV

BOX OFFICE CLOSED

FOR CHRISTMAS BREAK

The Box Office will closed at 2pm on Friday 13 December and reopen 10am Monday 6 January 2025.

Safe and Happy Summer Break to ALL



Office Hours: MON, TUE, FRI 10am–2pm

Phone: 9735 1777

Email: a.t.c@bigpond.net.au Website: www.lilydaleatc.com